

DIXON HOUSE

Open Plan Layout

Second Floor

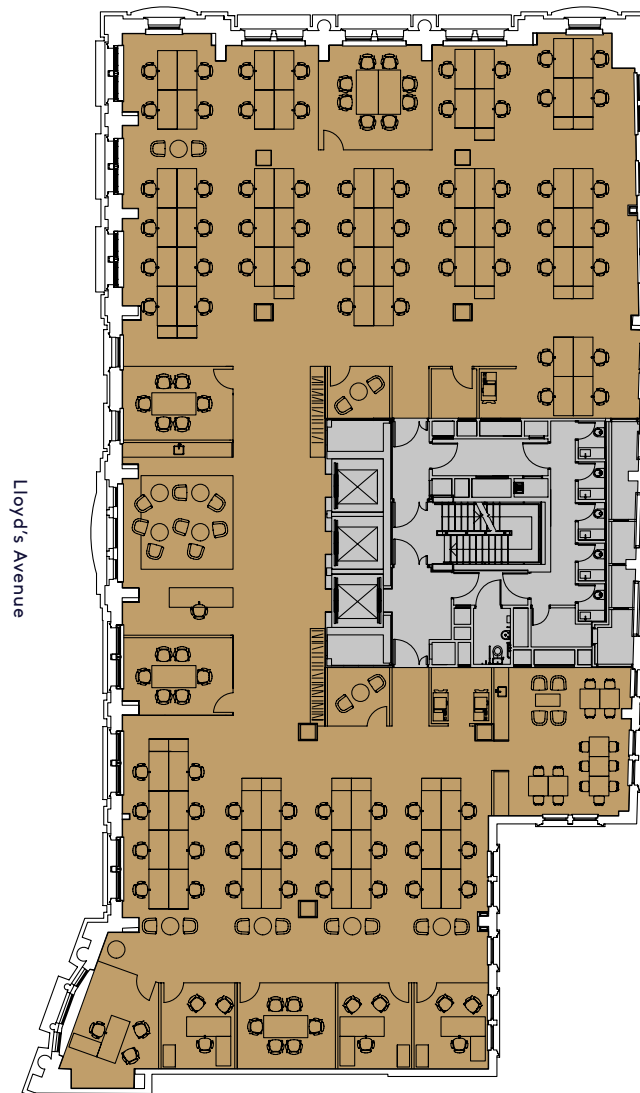
683 Sq m

7,347 Sq ft

Fenchurch Street

- 80 x Open Plan Desks
- 4 x 1 Person Offices
- 2 x 2 Person Meeting Rooms
- 3 x 6 Person Meeting Rooms
- 1 x 8 Person Meeting Room

Total Headcount - 84



● Office ● Core



All plans are for indicative purposes only and are not to scale.

DIXON HOUSE

Cellular Layout

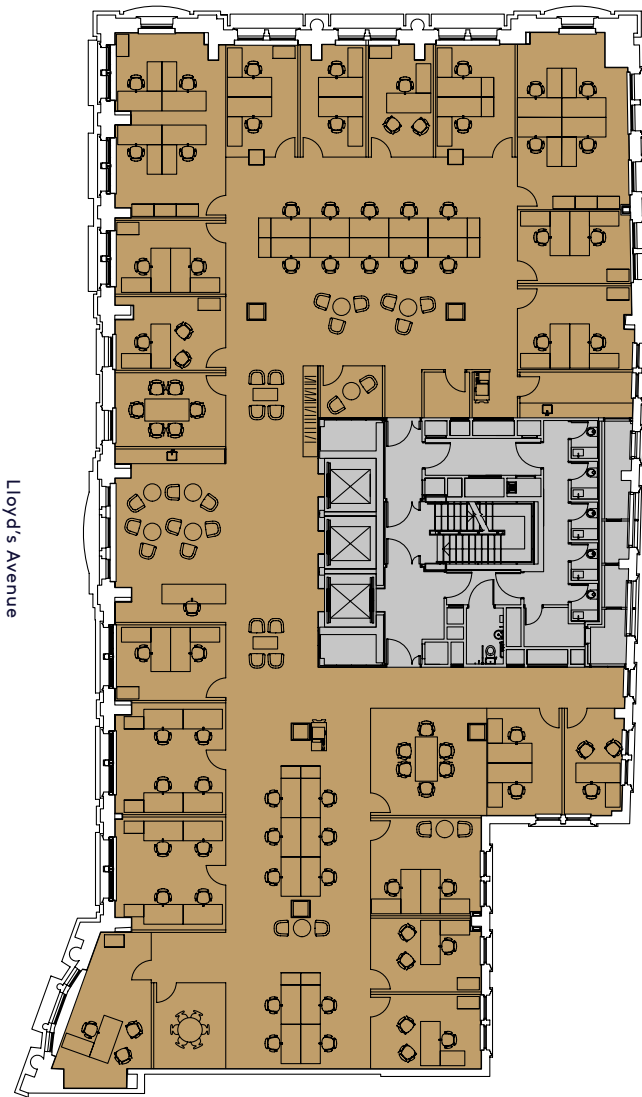
Second Floor

683 Sq m

7,347 Sq ft

Fenchurch Street

- 20 x Open Plan Desks
 - 6 x 1 Person Offices
 - 9 x 2 Person Offices
 - 4 x 4 Person Offices
 - 1 x 2 Person Meeting Room
 - 3 x 6 Person Meeting Rooms
- Total Headcount - 60**



● Office ● Core



All plans are for indicative purposes only and are not to scale.

DIXON HOUSE

Open Plan Layout

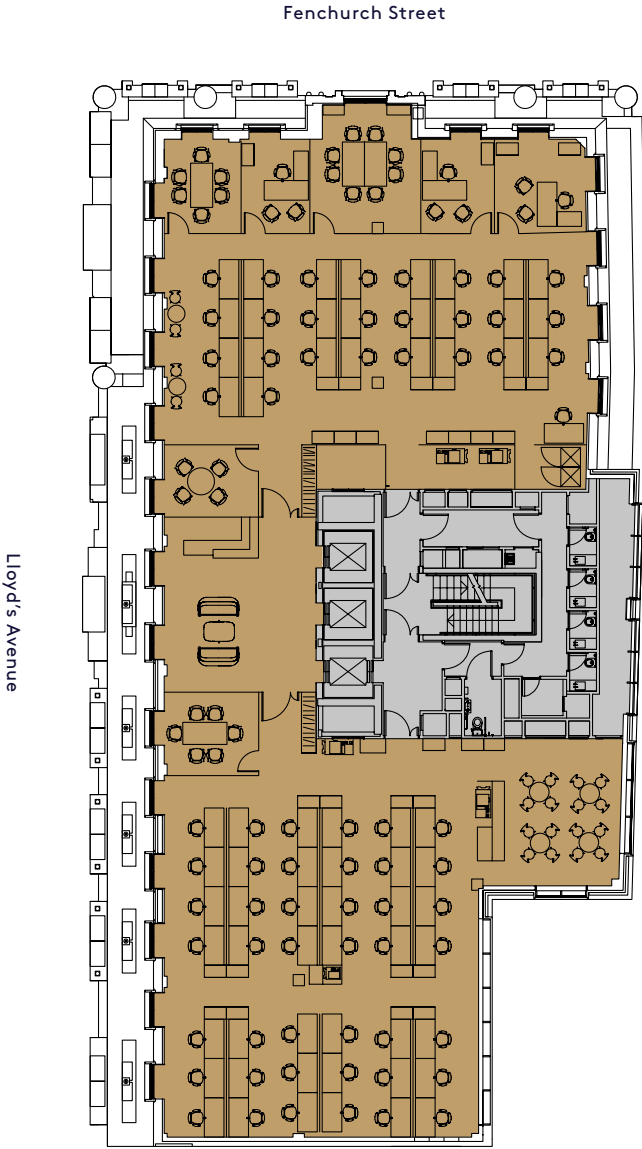
Fifth Floor

574 Sq m

6,180 Sq ft

- 69 x Open Plan Desks
- 3 x 1 Person Offices
- 1 x 4 Person Meeting Room
- 2 x 6 Person Meeting Rooms
- 1 x 8 Person Meeting Room

Total Headcount - 72



● Office ● Core



All plans are for indicative purposes only and are not to scale.

DIXON HOUSE

Cellular Layout

Fifth Floor

574 Sq m

6,180 Sq ft

Fenchurch Street

20 x Open Plan Workstations

6 x 1 Person Offices

14 x 2 Person Offices

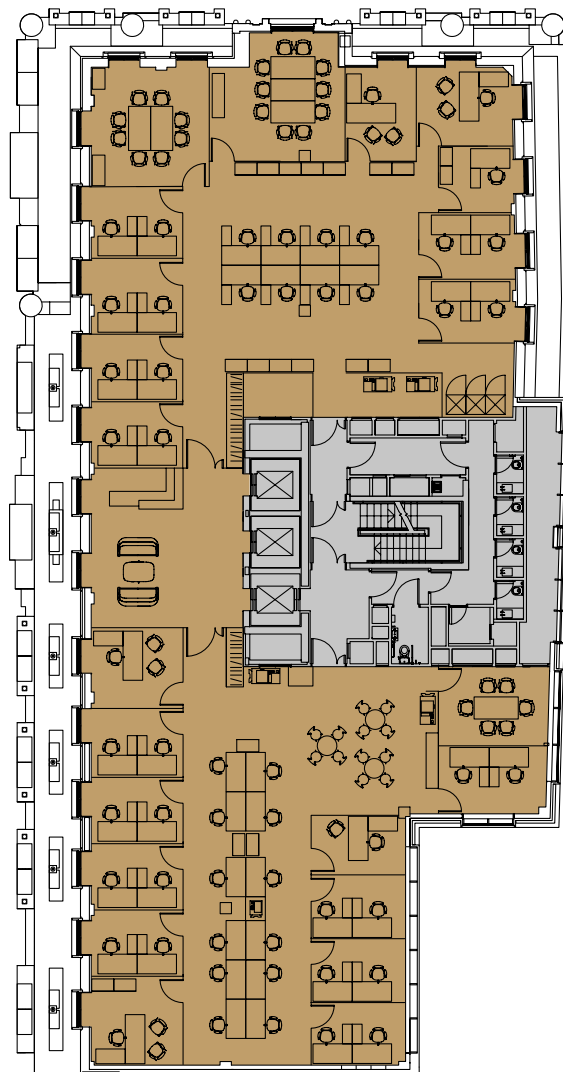
1 x 6 Person Meeting Room

1 x 8 Person Meeting Room

1 x 10 Person Meeting Room

Total Headcount - 54

Lloyd's Avenue



● Office ● Core



All plans are for indicative purposes only and are not to scale.